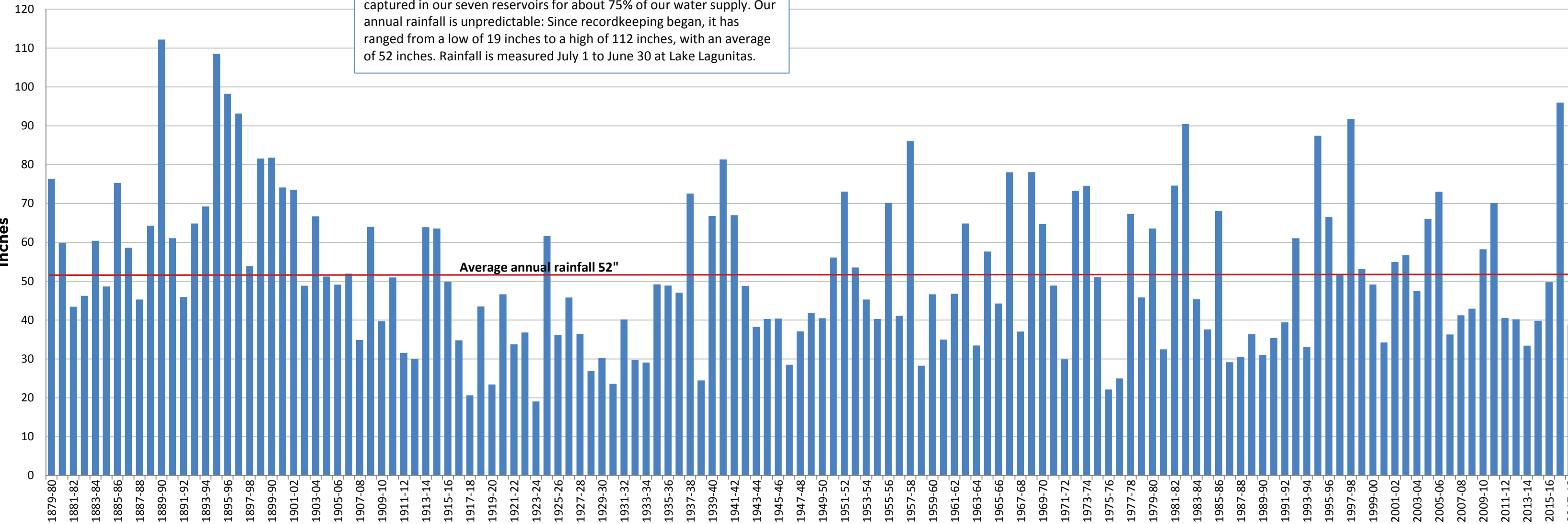


# A History of our Rainfall

The Marin Municipal Water District (MMWD) relies on local rainfall captured in our seven reservoirs for about 75% of our water supply. Our annual rainfall is unpredictable: Since recordkeeping began, it has ranged from a low of 19 inches to a high of 112 inches, with an average of 52 inches. Rainfall is measured July 1 to June 30 at Lake Lagunitas.



Rainfall Year (July 1 - June 30)