



Marin Municipal Water District Mt. Tamalpais Watershed

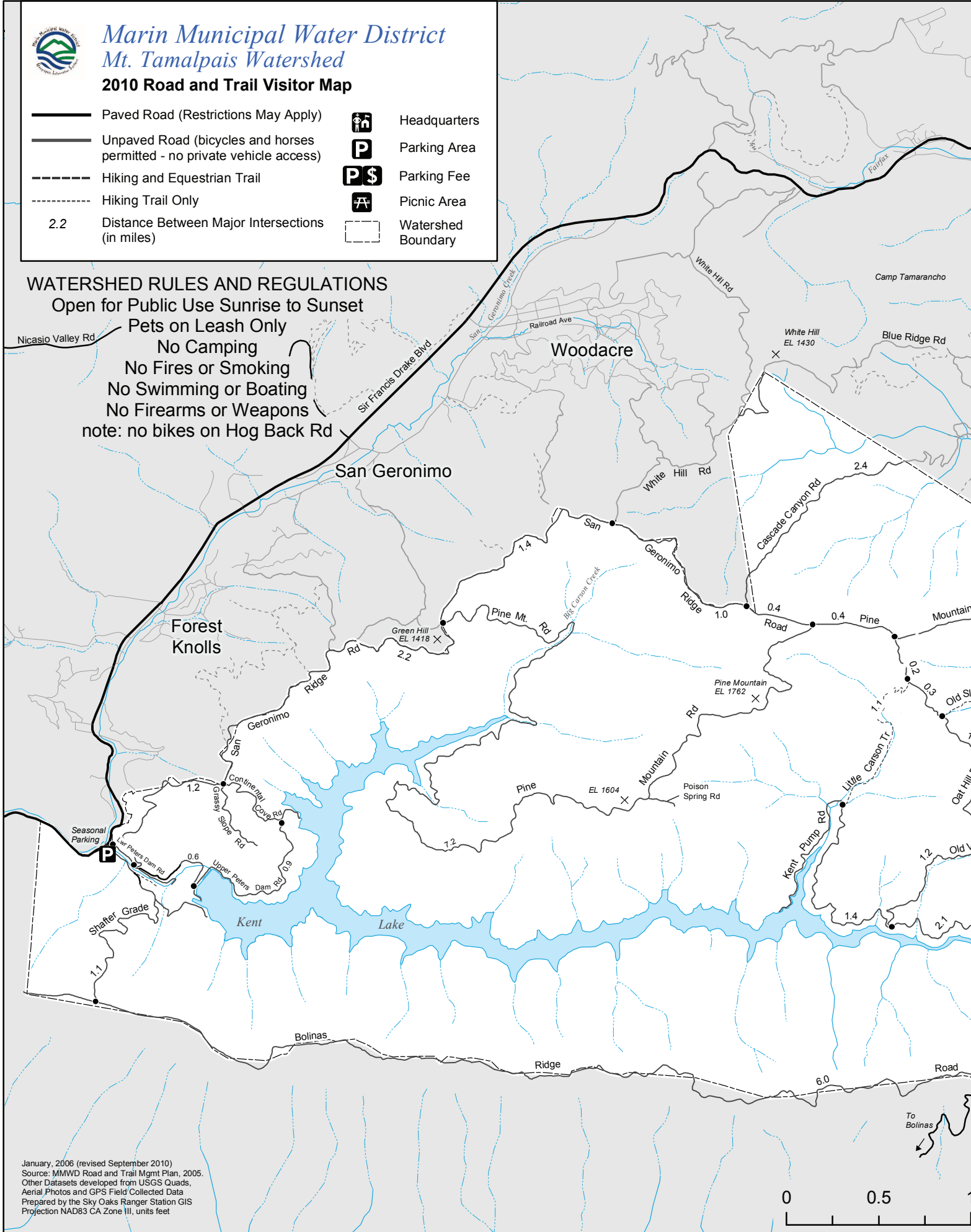
2010 Road and Trail Visitor Map

- Paved Road (Restrictions May Apply)
- Unpaved Road (bicycles and horses permitted - no private vehicle access)
- Hiking and Equestrian Trail
- Hiking Trail Only
- 2.2 Distance Between Major Intersections (in miles)
- Headquarters
- Parking Area
- Parking Fee
- Picnic Area
- Watershed Boundary

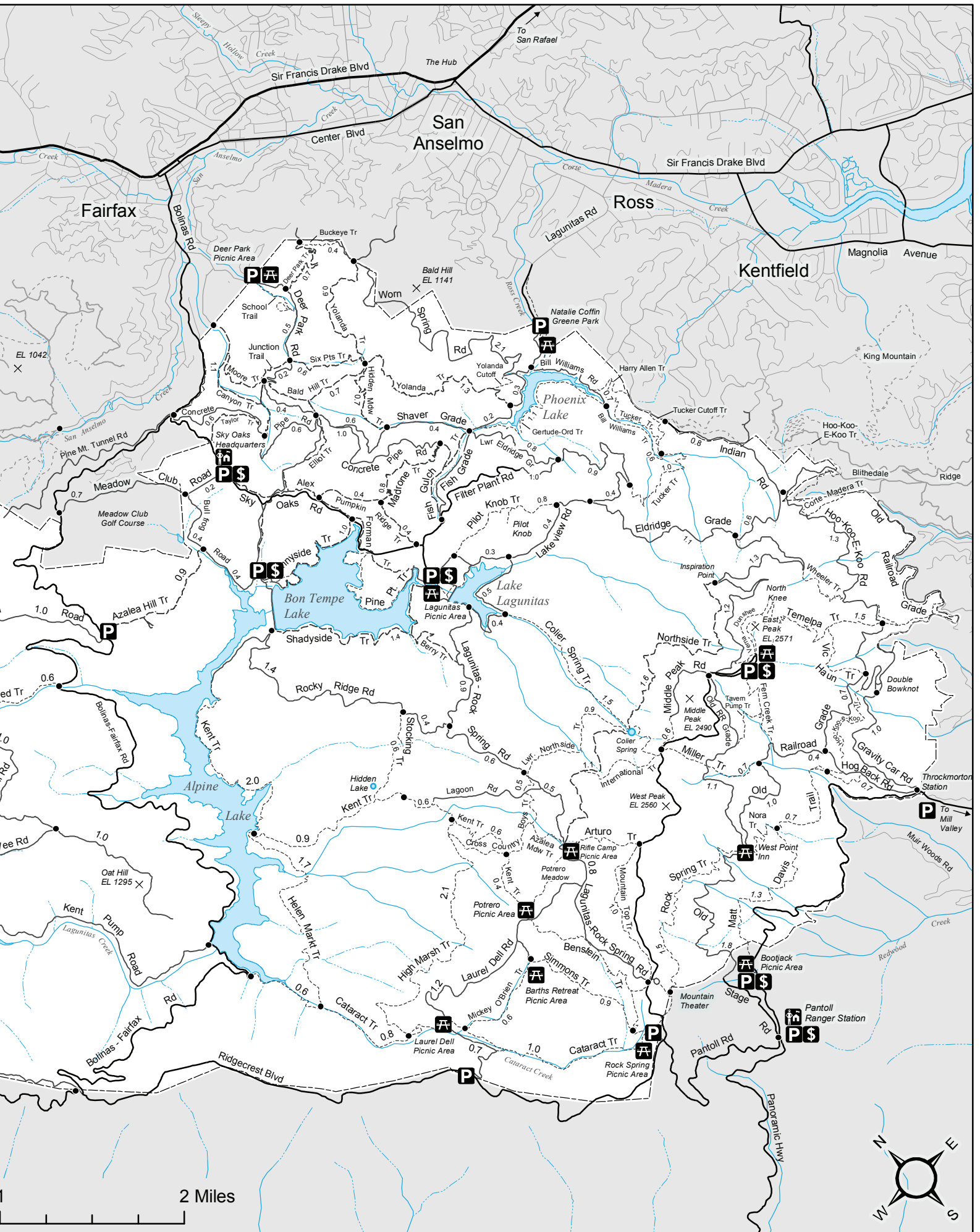
WATERSHED RULES AND REGULATIONS

Open for Public Use Sunrise to Sunset

- Pets on Leash Only
- No Camping
- No Fires or Smoking
- No Swimming or Boating
- No Firearms or Weapons
- note: no bikes on Hog Back Rd



January, 2006 (revised September 2010)
 Source: MMWD Road and Trail Mgmt Plan, 2005.
 Other Datasets developed from USGS Quads,
 Aerial Photos and GPS Field Collected Data
 Prepared by the Sky Oaks Ranger Station GIS
 Projection NAD83 CA Zone III, units feet



2 Miles

